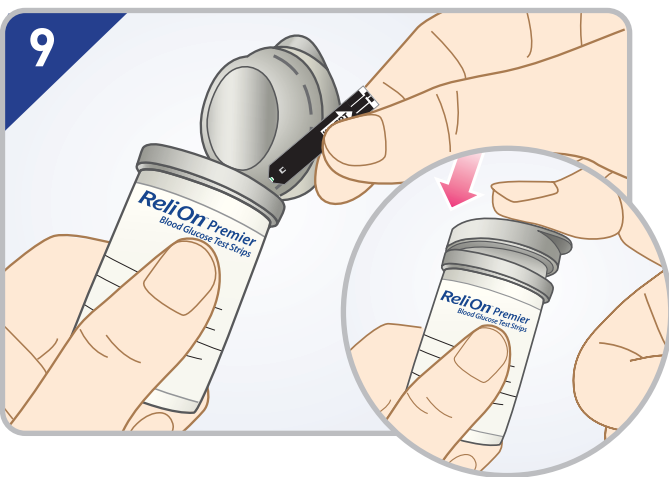
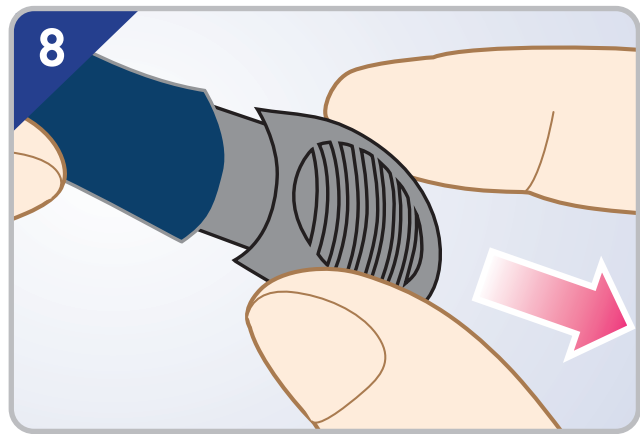
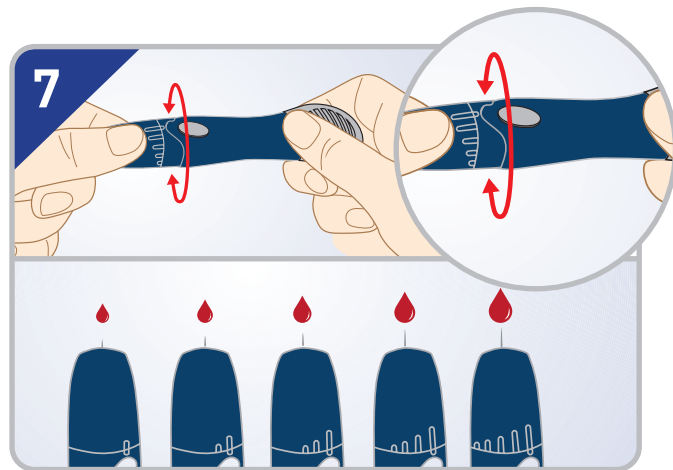
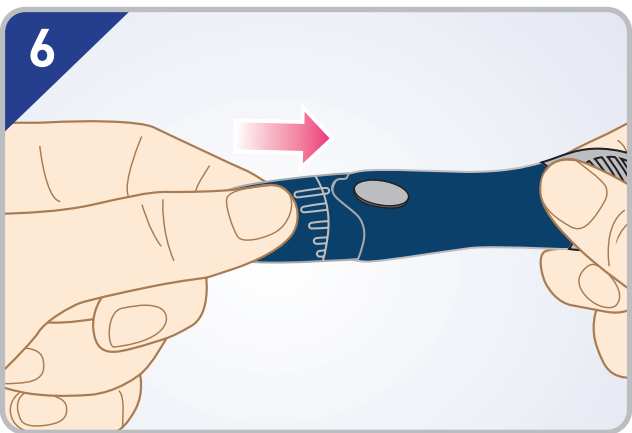
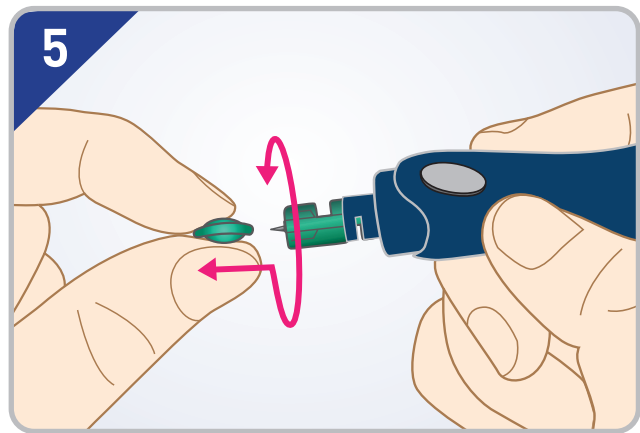
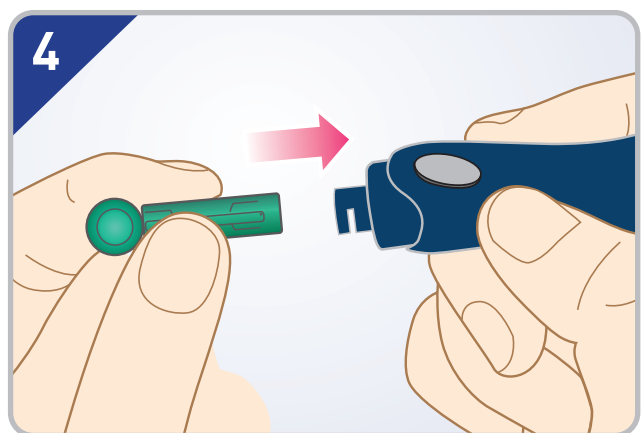
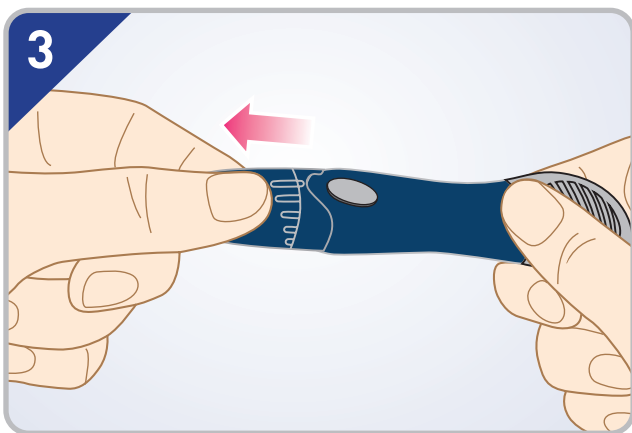
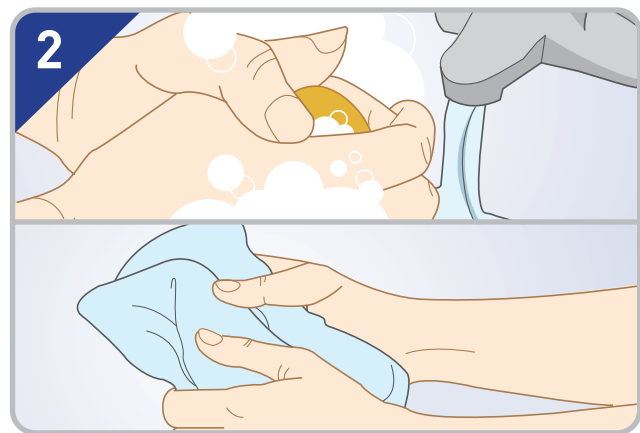
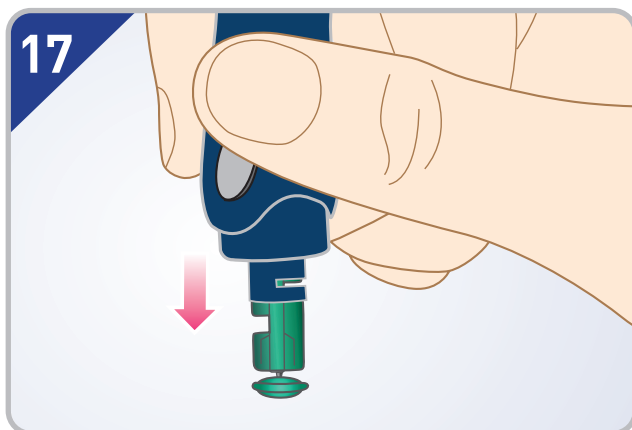
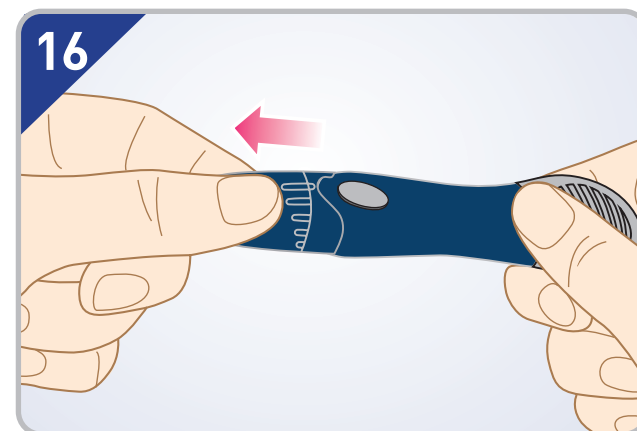
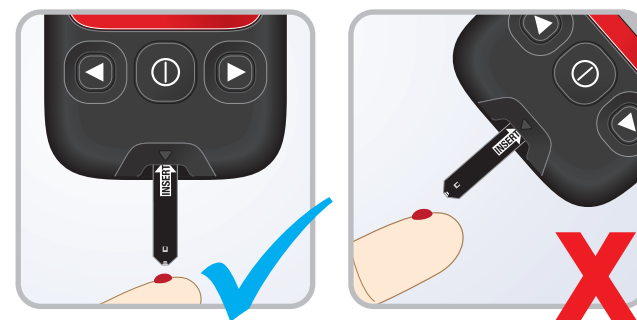
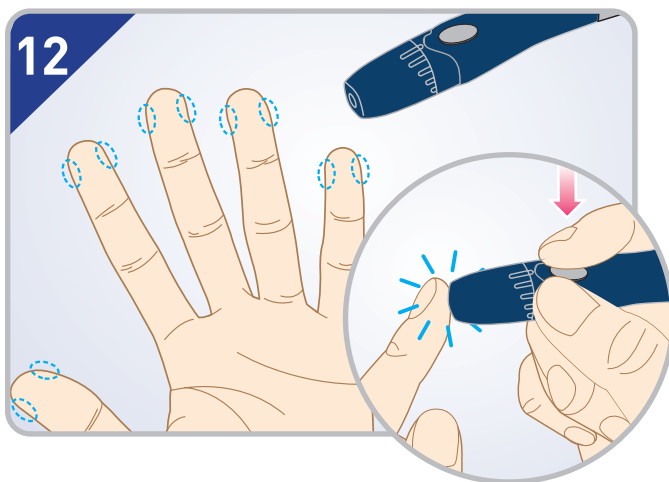
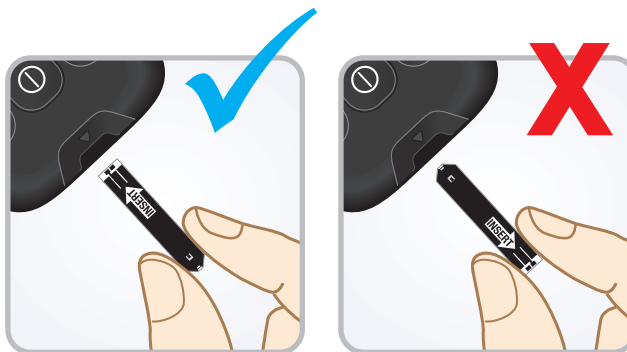


ReliOn™ PREMIER CLASSIC

Blood Glucose Monitoring System





Warning

- This meter and lancing device are for single patient use.
- **Do not** share them with anyone including other family members.
- **Do not** use on multiple patients.
- Please refer to your ReliOn™ Premier CLASSIC Blood Glucose Meter user manual for the cleaning and disinfection instructions and limitations.