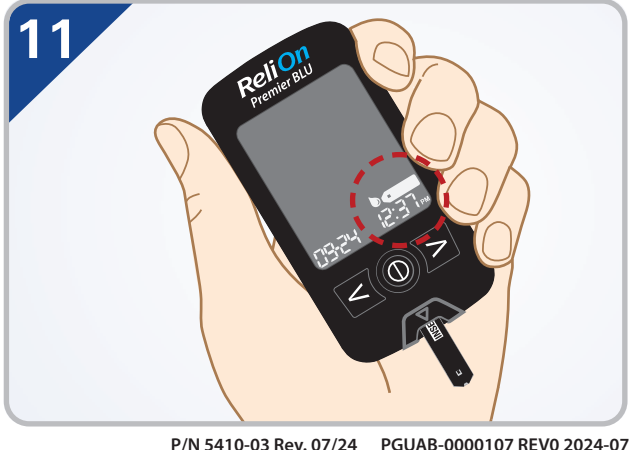
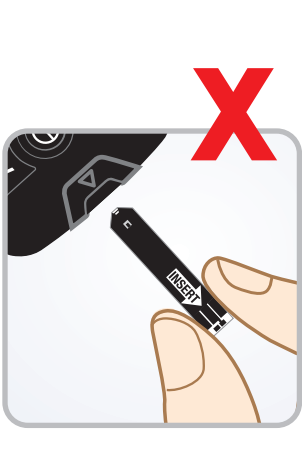
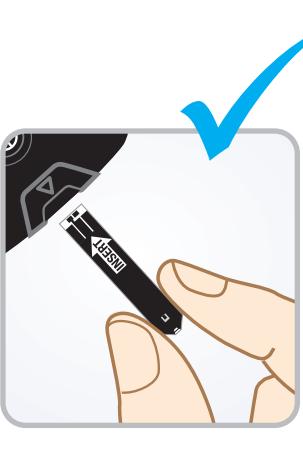
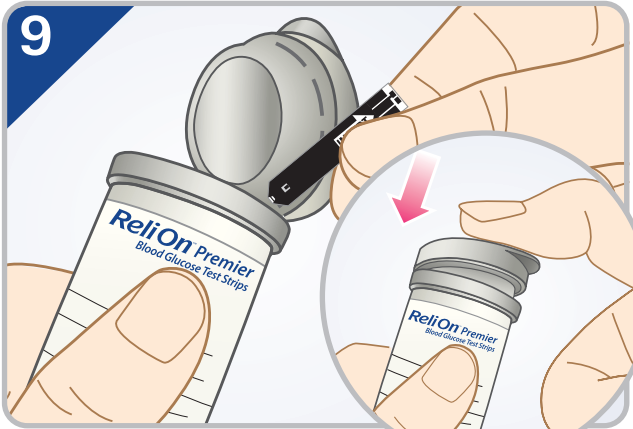
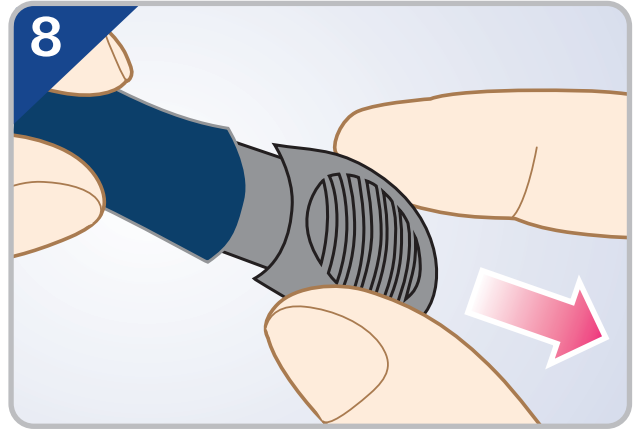
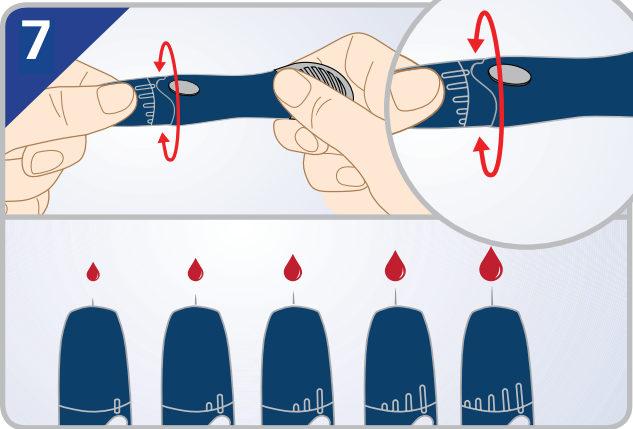
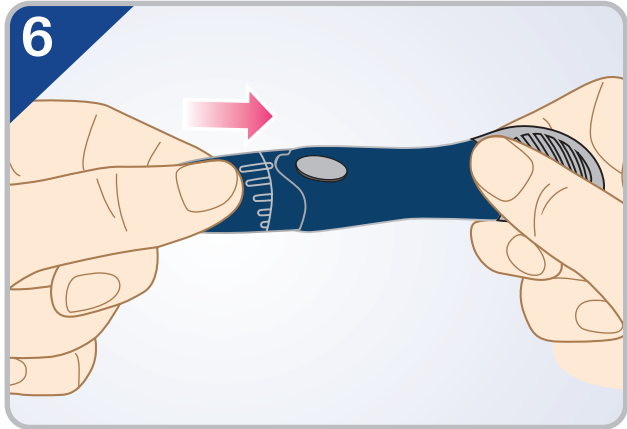
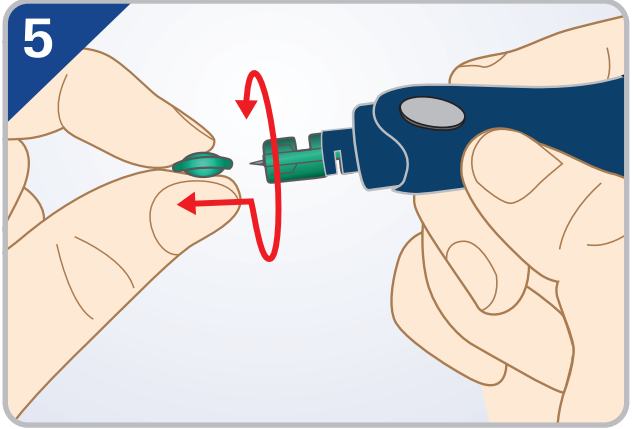
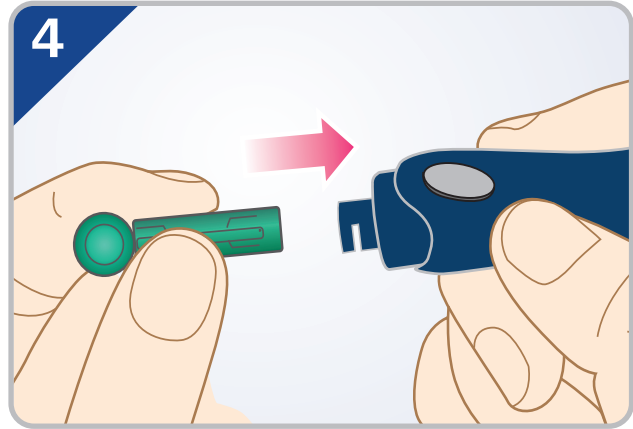
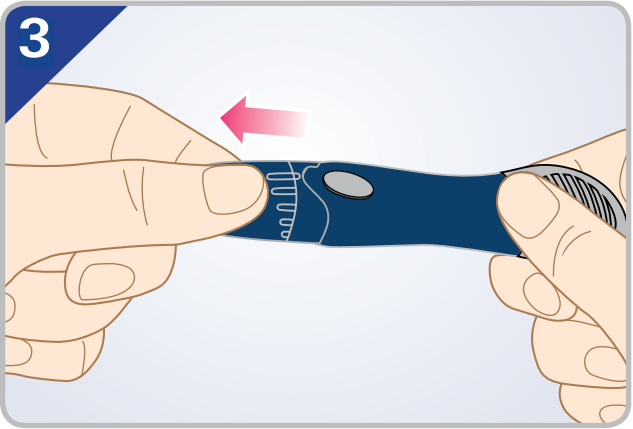
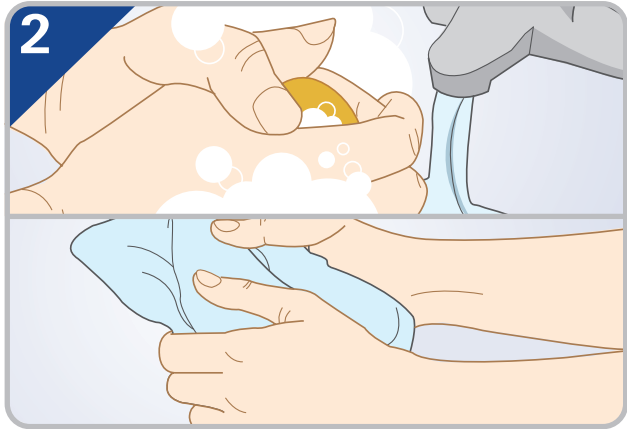
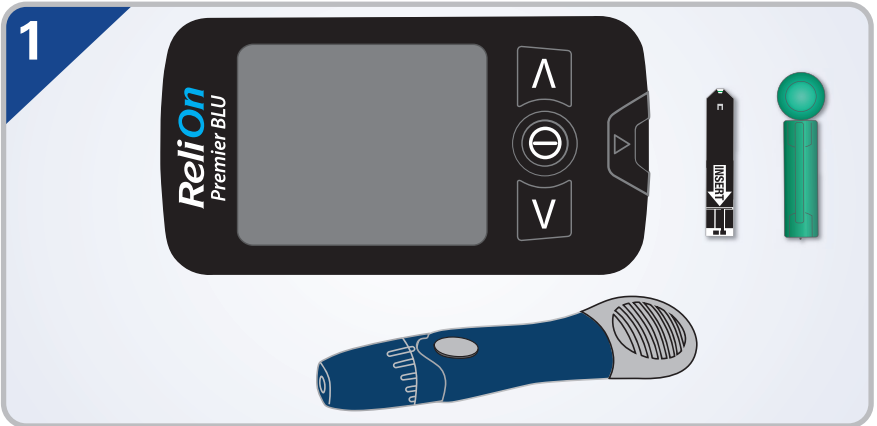


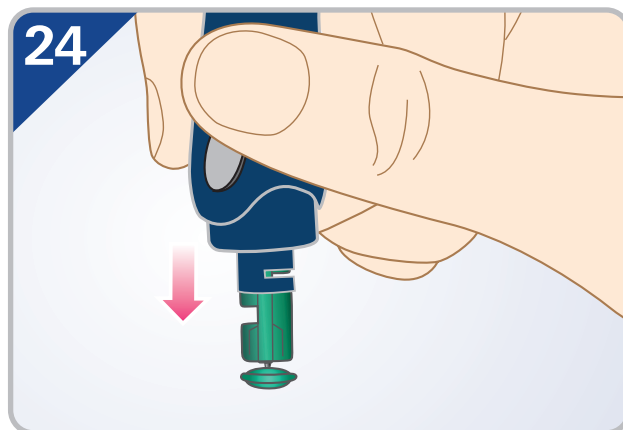
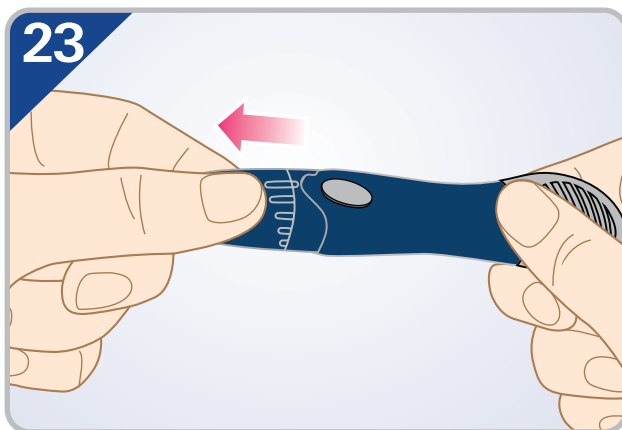
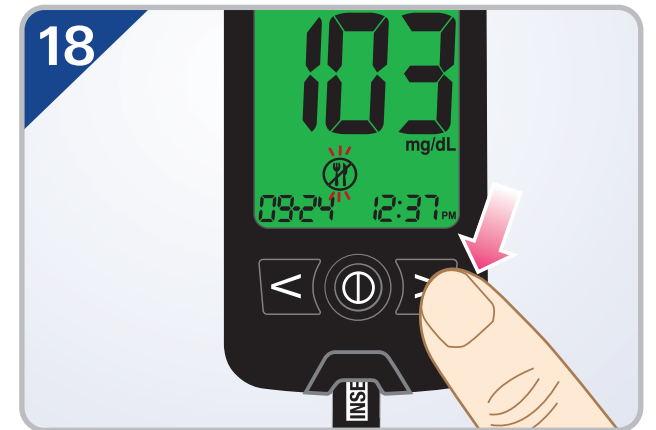
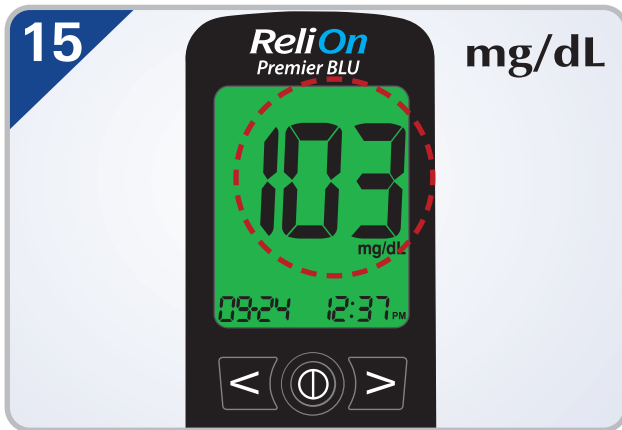
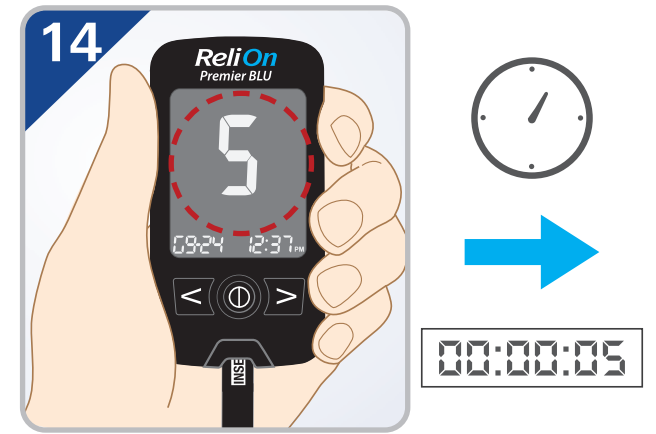
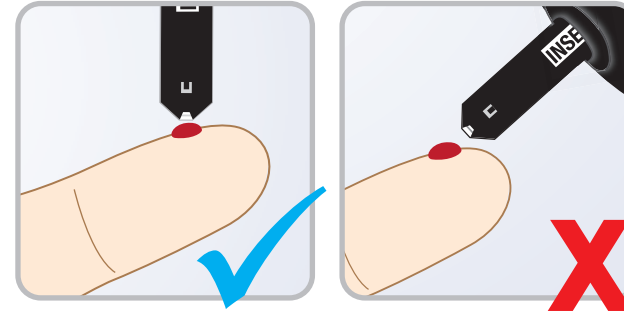
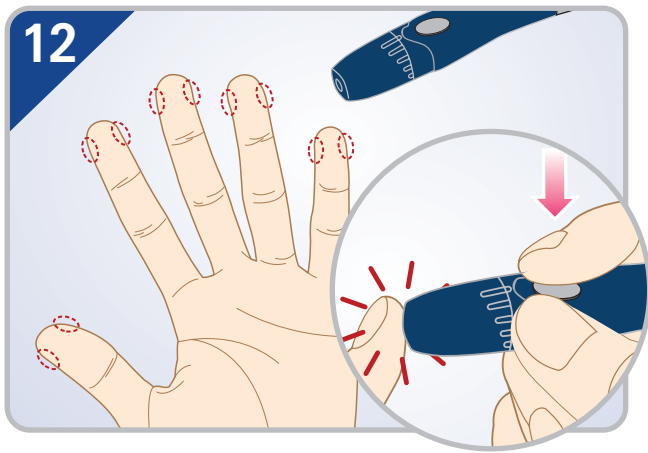
# ReliOn™ PREMIER BLU

Blood Glucose Monitoring System

## Target Range Indicator

- The color screen displays according to the preset target range.
- To understand the Color Screen, refer to page 19 of the user manual.
- Prior to activating the Target Range Indicator, consult your healthcare professional.
- To set the Target Range, refer to page 27 of the user manual.





**Warning**

- This meter and lancing device are for single patient use.
- **Do not** share them with anyone including other family members.
- **Do not** use on multiple patients.
- Please refer to your ReliOn™ Premier BLU Blood Glucose Meter user manual for the cleaning and disinfection instructions and limitations.